

## BIOSYNEX COVID-19 Ag BSS

RAPID DIAGNOSTIC TEST FOR THE QUALITATIVE DETECTION OF SARS-COV-2 ANTIGENS IN NASOPHARYNGEAL SWABS.  
For professional *in vitro* diagnostic use only.



### 1 | INTENDED USE

BIOSYNEX COVID-19 Ag BSS test is a rapid *in vitro* immunochromatographic assay for the qualitative detection of nucleocapsid protein antigen from SARS-CoV-2 in nasopharyngeal swab specimens. It is intended to aid in the rapid diagnosis of SARS-CoV-2 infections. The BIOSYNEX COVID-19 Ag BSS test does not differentiate between SARS-CoV and SARS-CoV-2.

### 2 | SUMMARY

The novel coronaviruses belong to the  $\beta$  genus. COVID-19 is an acute respiratory infectious disease. People are generally susceptible. Currently, the patients infected by the novel coronavirus are the main source of infection; asymptomatic infected people can also be an infectious source. Based on the current epidemiological investigation, the incubation period is 1 to 14 days, mostly 3 to 7 days. The main manifestations include fever, fatigue and dry cough. Nasal congestion, runny nose, sore throat, myalgia and diarrhea are found in a few cases. This test is for detection of SARS-CoV-2 nucleocapsid protein antigen. Antigen is generally detectable in upper respiratory specimens during the acute phase of infection. Rapid diagnosis of SARS-CoV-2 infection will help healthcare professionals to treat patients and control the disease more efficiently and effectively.

### 3 | PRINCIPLE OF THE TEST

The BIOSYNEX COVID-19 Ag BSS test is an immunochromatographic membrane assay that uses highly sensitive monoclonal antibodies to detect nucleocapsid protein from SARS-CoV-2 in nasopharyngeal (NP) swab. The test strip is composed of the following parts: namely sample pad, reagent pad, reaction membrane, and absorbing pad. The reagent pad contains the colloidal-gold conjugated with the monoclonal antibodies against the nucleocapsid protein of SARS-CoV-2; the reaction membrane contains the secondary antibodies for nucleocapsid protein of SARS-CoV-2. The whole strip is fixed inside a plastic device. When the sample is added into the sample well, conjugates dried in the reagent pad are dissolved and migrate along with the sample. If SARS-CoV-2 antigen is present in the sample, a complex formed between the anti-SARS-CoV-2 conjugate and the virus will be captured by the specific anti-SARS-CoV-2 monoclonal antibodies coated on the test line region (T). Absence of the T line suggests a negative result. To serve as a procedural control, a red line will always appear in the control line region (C) indicating that a proper volume of sample has been added and membrane wicking has occurred.

### 4 | KIT CONTENTS

Materials Provided

Test cassettes	Extraction tubes
Buffer	Workstation
Sterile Swabs	Package insert

Materials required but not provided

Clock, timer or stopwatch

### 5 | PRECAUTIONS

- For professional *in vitro* diagnostic use only. Do not use after expiration date.
- Do not eat, drink or smoke in the area where the specimens or kits are handled.
- Handle all specimens as if they contain infectious agents. Observe established precautions against microbiological hazards throughout the procedure and follow the standard procedures for proper disposal of specimens.
- Wear protective clothing such as laboratory coats, disposable gloves and eye protection when specimens are assayed.
- The used tests, specimens and potentially contaminated material should be discarded according to the local regulations.
- Humidity and temperature can adversely affect results.
- The extraction buffer contains a solution with a preservative (0.09% sodium azide). If solution comes in contact with the skin or eyes, flush with ample volumes of water.
- Solutions that contain sodium azide may react explosively with lead or copper plumbing. Use large quantities of water to flush discarded solutions down a sink.
- Do not interchange or mix components from different kit lots.

- When collecting a nasopharyngeal swab sample, use the nasopharyngeal swab supplied in the kit.
- To obtain accurate results, do not use visually bloody or overly viscous samples.
- The test device should remain in the sealed pouch until use.
- Swabs, tubes and test device are for single use only.

### 6 | STORAGE AND STABILITY

- The kit can be stored at room temperature or refrigerated (2-30°C).
- Do not freeze any of the test kit components.
- Do not use test device and reagents after expiration date.
- Test devices that have been outside of the sealed pouch for more than 1 hour should be discarded.

### 7 | SAMPLE COLLECTION AND STORAGE

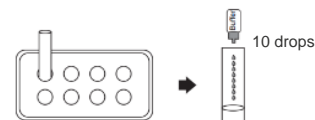
Use the nasopharyngeal swab supplied in the kit:

1. Carefully insert the swab into the nostril of the patient, reaching the surface of posterior nasopharynx that presents the most secretion under visual inspection.
2. Swab over the surface of the posterior nasopharynx. Rotate the swab several times.
3. Withdraw the swab from the nasal cavity.
4. Specimens should be tested as soon as possible after collection.

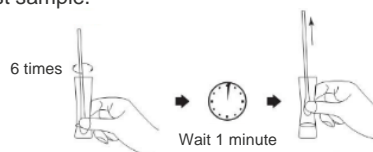


### 8 | SAMPLE PREPARATION PROCEDURE

1. Insert the extraction tube into the workstation. Make sure that the tube is standing firm and reaches the bottom of the workstation.
2. Add 0.3 mL (about 10 drops) of the sample extraction buffer into the extraction tube.



3. Insert the swab into the extraction tube which contains 0.3 mL of the extraction buffer.
4. Roll the swab at least 6 times while pressing the head against the bottom and side of the extraction tube.
5. Leave the swab in the extraction tube for 1 minute.
6. Squeeze the tube several times with fingers from outside of the tube to immerse the swab. Remove the swab. The extracted solution will be used as test sample.



### 9 | SPECIMEN TRANSPORT AND STORAGE

**Do not return the nasopharyngeal swab to the original paper packaging.**

For best performance, direct nasopharyngeal swabs should be tested as soon as possible after collection. If immediate testing is not possible, it is recommended that the nasopharyngeal swab is placed in a clean, unused tube labeled with the patient information and sealed tightly at room temperature (15-30°C) for up to 1 hour following sample collection. If greater than a 1 hour delay occurs between sample collection and testing, dispose of the sample. A new sample must be collected for testing.

### 10 | TEST PROCEDURE

Allow the test device, test sample and buffer to equilibrate to room temperature (15-30°C) prior to testing.

1. Remove test device from the sealed pouch just prior to the testing and lay flat on work bench.



2. Insert a nozzle with filter into the sample extraction tube tightly.
3. Reverse the sample extraction tube, and add 4 drops (about 100 µL) of test sample by squeezing the extracted solution tube into the sample window.
4. Wait for the colored band(s) to appear. The result should be read at 15 minutes. Do not interpret the result after 20 minutes.



## 11 | INTERPRETATION OF RESULTS

### POSITIVE:

The presence of two lines as control line (C) and test line (T) within the result window indicates a positive result.

C T

### NEGATIVE:

The presence of only control line (C) within the result window indicates a negative result.

C T

### INVALID:

If the control line (C) is not visible within the result window after performing the test, the result is considered invalid. Some causes of invalid results are because of not following the directions correctly or the test may have deteriorated beyond the expiration date. It is recommended that the specimen be re-tested using a new test.

C T

### NOTE:

1. The intensity of color in the test line region (T) may vary depending on the concentration of analytes present in the specimen. Therefore, any shade of color in the test line region (T) should be considered positive. Please note that this is a qualitative test only, and cannot determine the concentration of analytes in the specimen.
2. Insufficient specimen volume, incorrect operating procedure or expired tests are the most likely reasons for control band failure.

## 12 | QUALITY CONTROL

A procedural control is included in the test. A red line appearing in the control line region (C) is the internal procedural control. It confirms sufficient specimen volume and correct procedural technique. Control standards are not supplied with this test. However, it is recommended that positive and negative controls are sourced from a local competent authority and tested as a good laboratory practice, to confirm the test procedure and verify the test performance.

## 13 | LIMITATIONS

1. The etiology of respiratory infection caused by microorganisms other than SARS-CoV-2 will not be established with this test. BIOSYNEX COVID-19 Ag BSS test is capable of detecting both viable and non-viable SARS-CoV-2. The performance of the BIOSYNEX COVID-19 Ag BSS test depends on antigen load and may not correlate with viral culture results performed on the same specimen.
2. Failure to follow the Test Procedure may adversely affect test performance and/or invalidate the test result.
3. If the test result is negative and clinical symptoms persist, additional testing using other clinical methods is recommended. A negative result does not at any time rule out the presence of SARS-CoV-2 antigens in specimen, as they may be present below the minimum detection level of the test or if the sample was collected or transported improperly.
4. As with all diagnostic tests, a confirmed diagnosis should only be made by a physician after all clinical and laboratory findings have been evaluated.
5. Positive test results do not rule out co-infections with other pathogens.
6. Positive test results do not differentiate between SARS-CoV and SARS-CoV-2.
7. Negative results should be treated as presumptive and confirmed with a PCR assay.

## 14 | PERFORMANCE CHARACTERISTICS

### Sensitivity, Specificity and Accuracy

The BIOSYNEX COVID-19 Ag BSS test has been evaluated with specimens obtained from patients. A commercialized molecular assay was used as the reference method.

The study included 206 samples (75 confirmed positive and 131 negative samples).

		PCR		Total Results
		Positive	Negative	
BIOSYNEX COVID-19 Ag BSS	Positive	67	0	67
	Negative	8	131	139
Total Results		75	131	206

Sensitivity: 89.3% (95%CI\*: 85.1%-93.5%)

Specificity: 100% (95%CI\*: 100%-100%)

Accuracy: 96.1% (95%CI\*: 93.5%-98.7%)

\*Confidence Intervals

## SYMBOLS

	Attention, see instruction for use		Tests per kit		Catalog number
	For <i>in vitro</i> diagnostic use only		Store between 2-30°C		Do not reuse
	Do not use if package is damaged		Lot number		Expiry
	Manufacturer		Buffer		

IFU\_SW40006\_EN\_V02202008R04  
Date of revision: September 2020

